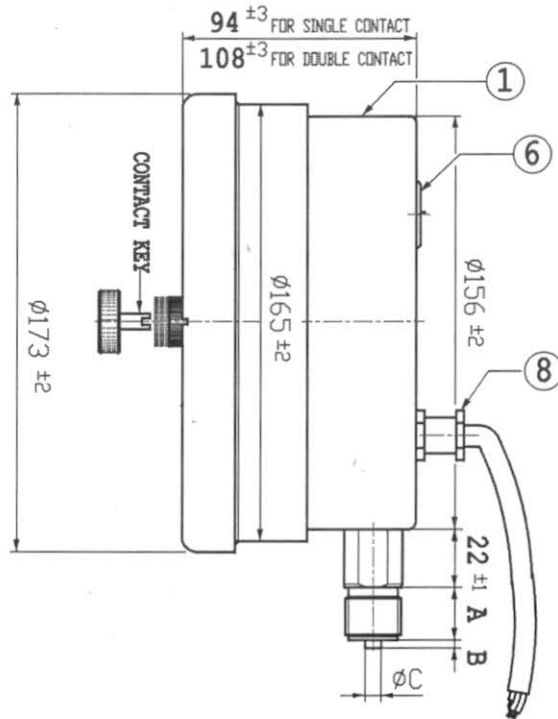


THREAD CONN.

THREAD DIMENSIONS:-

THREAD SIZE	A	B	ØC
3/8" BSP (M)	16	3	5.5
1/2" BSP (M)	20	3	6
1/2" NPT (M)	21	-	-
M20x1.5p (M)	25	-	-



**150mm CONTACT PRESSURE GAUGE
BOTTOM CONNECTION, DIRECT MOUNTING**

- * TYPE : 10-44
- * SIZE : 150mm
- * CONNECTION : BOTTOM
- * MOUNTING : DIRECT
- * CLASS OF ACCURACY : ± 2% OF F.S.D.

PART-LIST

- 1. CASE & BEZEL : DIE-CAST ALUMINIUM & BEZEL THREADED, STOVED ENAMEL BLACK FINISH.
- 2. SOCKET : AISI S.S.316
- * THREAD CONN. : _____
- 3. DIAL : ALUMINIUM, WHITE BACK-GROUND & BLACK NUMERALS
- 4. WINDOW : ACRYLIC
- 5. POINTER : BRASS, BLACK FINISH
- 6. BLOW OFF DISC : NEOPRENE
- 7. CONTACT : SINGLE DOUBLE
- * ARRANGEMENT : TYPE _____
- * TYPE OF CONTACT : MAGNETIC
- 8. CABLE : 1meter CABLE THROUGH CABLE GLAND

CONTACT RATING

- * VOLTAGE : 24v DC/380v AC
- * LOAD : 50 VA/30 Watts
- * MAX. CURRENT : NOT TO EXCEED 1 Amp.

INTERNAL PARTS

- * BOURDON TUBE : AISI S.S.316
- * MOVEMENT : AISI S.S.304

NOTES:-

- I) ALL DIMENSIONS ARE IN mm.
- II) REFER DWG.No,CON-100/150-01 R1 FOR CONTACT ARRANGEMRNT



DRAWN BY	18/12/2014	<i>[Signature]</i>
CHECKED BY	18/12/2014	<i>[Signature]</i>
APPROVED BY	18/12/2014	
REVISED BY		

MANOMETER (I) PVT. LTD.

TITLE: 150mm CONTACT PRESSURE GAUGE

SCALE	MATERIAL	TOLERANCE	CODE No.
NOT TO SCALE	AS ABOVE	AS SPECIFIED	-

DWG. No. 10-150-DM-004

REV. 0