

Non-Cycling Refrigerated Dryers

42 – 4800 m³/hr

With a compact footprint that simplifies installation and commissioning, our next generation of refrigerated dryers provide an efficient, reliable and environmentally friendly solution for clean, dry air.



Stress-free, High-quality Air

CompAir CDF refrigerated dryers make providing continuous dry air as easy as piping a self-contained unit into your compressed air supply line. Ideal for 5 – 300 kW compressors or point-of-use applications, these dryers provide clean, dry air with corrosion protection in the air distribution system, less damage to air-powered tools and a reduction in possible contamination during the production process.

By using CDF refrigerated dryers, you will help reduce additional costs associated with ruined finished products, scrapped materials and the replacement of pneumatic tools and manufacturing equipment destroyed by wet air.

The CDF's innovative compact design minimises the impact on valuable manufacturing floor space, and is very easy to install with single point customer connections. Easy access to components also simplifies routine maintenance.

Designed for Optimum Efficiency

Our CDF non-cycling refrigerated dryers offer multiple design features to ensure a constant dew point at all load levels, as well as continuous delivery of dry air performance that satisfies ISO 7183 industry standards. These features include a high-efficiency 3-in-1 heat exchanger, variable speed condenser fans and automatic drain valves.

The dryer's full-featured controller, with enhanced monitoring and alarms, is more sophisticated and powerful than similarly sized competitive products. And we test every unit to ensure leak-free operation and compliance with all operating specifications.

Affordable for Any Application

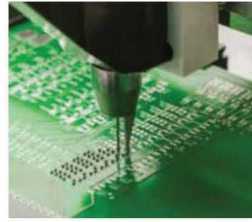
With flow rates ranging from 42 – 4800 m³/hr, our reliable refrigerated dryers provide a complete, affordable solution for a wide variety of applications from small operations to large-scale industrial including:



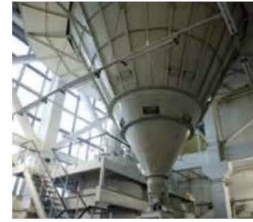
Dry Cleaning



Automotive



Electronics



Chemical



Textile

Low Cost of Ownership

Our CDF refrigerated dryers offer design features that reduce energy consumption and improve reliability:

- 1** Corrosion resistant heat exchangers reduce airflow restrictions, providing more efficient throughput with less wasted energy; a built-in stainless steel de-mister efficiently removes all moisture
- 2** Microprocessor control with an easy to use graphic interface lets the operator adjust and manage system parameters easily and efficiently
- 3** Variable speed fans reduce power consumption when units operate at less than maximum cooling capacity, while ensuring a consistent dew point
- 4** Reliable, totally hermetic compressors use environmentally friendly refrigerants
- 5** The programmable electronic drain valve is fully adjustable to help minimise air loss



Technical Specifications

Model	Air Flow Rate	Power		Air Connection	Weight	Dimension	Power
	m ³ /Hr.	cfm	kW	in/out (inch) BSPT	kg	W x L x H (mm)	V/Ph/Hz
CD7F-A	42	25	0.17	1/2"BSP(F)	26	389X431X452	230/1/50
CD12F-A	72	42	0.20	1/2"BSP(F)	26	389X431X452	230/1/50
CD24F-A	144	85	0.47	3/4"BSP(F)	38	420X515X562	230/1/50
CD30F-A	180	106	0.61	3/4"BSP(F)	43	420X515X562	230/1/50
CD40F-A	240	141	0.90	1 1/2"BSP(F)	76	500X679X978	230/1/50
CD60F-A	360	212	0.90	1 1/2"BSP(F)	76	500X679X978	230/1/50
CD80F-A	480	283	1.24	1 1/2"BSP(F)	82	500X679X978	230/1/50
CD100F-A	600	353	2.11	1.5 BSP(F)	145	1356X750X720	230/1/50
CD130F-A	780	459	2.11	1.5 BSP(F)	150	1356X750X720	230/1/50
CD160F-A	950	559	2.43	2 BSP(F)	162	1356X750X720	230/1/50
CD216F-A	1300	765	2.46	3" (#150 LBS)	245	1468X1198X925	415/3/50
CD235F-A	1410	830	3.14	3" (#150 LBS)	259	1468X1198X925	415/3/50
CD315F-A	1890	1,112	4.10	3" (#150 LBS)	315	1468X1198X925	415/3/50
CD420F-A	2520	1,483	4.93	4" (#150 LBS)	345	1468X1198X925	415/3/50
CD500F-A	3000	1,766	5.66	5" (#150 LBS)	487	1568X1555X1338	415/3/50
CD700F-A	4200	2,472	7.14	5" (#150 LBS)	579	1568X1555X1338	415/3/50
CD800F-A	4800	2,825	7.91	6" (#150 LBS)	622	1568X1555X1338	415/3/50

Note:

- Performance data is based on 25°C cooling air temperature, 35°C inlet air temperature, and 7 Bar g Inlet pressure.
- Maximum Inlet Air temperature 60 °C, Maximum Working Pressure 14 bar g, Maximum Ambient Temperature 55 °C.
- CD7 to CD80 Dryer rated for an ISO Class 5 Pressure Dew Point in accordance to ISO 8573-1 Standards
- CD100 to CD800 Dryer rated for an ISO Class 4 Pressure Dew Point in accordance to ISO 8573-1:2001 Standards



Machine Tools Centre
A Consortium of Zero Error Process Instruments

www.mtcin.com compressor@mtcin.com

For any queries, please reach out to us on Ingersollrand_MEIA@irco.com
www.compair.com