

High Precision Dead Weight Testers

Hydraulic

H6900N

Bench-top / Table-top Model

Ideal for Fine Increments & for Medium Volume Calibration. Ensures – Easy & Controllable Pressure generation for Calibrating Pressure Gauges / Transducers / Transmitters, Transfer Standards, Recorders, Digital Calibrators etc.

Screw Pump with built-in Priming Pump

SALIENT FEATURES

- Engineering Units : bar / Kg/Cm² / psi (Kpa & Mpa also available)
- Adjustable Foot & Spirit Level
- Piston Calibrated thro' "Cross Floating Techniques"
- Calibrated to Standard Gravity
(Optional : Calibration to Local Gravity as per Customer's requirement)
- Accuracies Traceable to International Standards
- Non-Magnetic Stainless Steel Weight Sets
- Calibration Certificate – for overall Accuracy + PCU (Area) + Weights (Mass) from NABL Accredited Lab – as per ISO/IEC 17025:2017
- DWTCal Software



Typical Photo. Original Product may vary. Gauge/Indicator not included in Basic Instrument

SPECIFICATIONS

Ranges	1000 / 1200 bar	} Refer Table 2
Piston	Single / Dual	
Standard Accuracy	±0.1% / ±0.05% / ±0.025% / ±0.015% / ±0.01% of Reading	} Refer Table 1
Traceability	International Standards	
Weights	Non-Magnetic Stainless Steel	
Pressure generation	Thro' Priming Pump & Screw Ram	
Standard Corrections	Gravity : 9.80665 m/s ² * / Temperature : 23°C / Air Density : 1.2 Kg/Cm ²	
Weight (approx.)	Instrument : 19 Kg. ; Weight Sets : 8 to 33 Kg.	Refer Table 2
No. of Weights	12 to 15	
Instrument Dimensions	600 x 500 x 360 mm (L x W x H)	
Operating Fluid	Oil	

Table 1

Model	Accuracy	PCU	Weight Set	Certification	Remarks
H6900N	±0.015% of Reading	Tungsten Carbide Piston & Matching Cylinder	Non-Magnetic Stainless Steel	Overall Accuracy + PCU + Weights (Mass)	From ISO/IEC 17025:2017 NABL Accredited Calibration Lab
H6990N	±0.01% of Reading				

Table 2

Piston Type	Piston Model	Pressure Ranges		
		1 / bar	2 / Kg/Cm ²	3 / psi
Single	SP-1000	10 to 1000	10 to 1000	150 to 15000
Single	SP-1200	10 to 1200	10 to 1200	150 to 18000
Dual	DP-1000	1 to 1000	1 to 1000	15 to 15000
Dual	DP-1200	1 to 1200	1 to 1200	15 to 18000

STANDARD INCLUSIONS

- Basic Instrument
- Calibrated Stainless Steel Weight Sets Refer Table 1 & 2
- Full set of Adaptors consisting of 1/8", 1/4", 3/8", 1/2" BSP (Set of NPT Adaptors available on request)
- Operating Fluid (500 ml)
- Spirit Level, Pointer Puller / Punch
- Set of Spanners & Screw Driver
- 'O' Ring & Seals
- Wooden Carrying Case (for Weight Sets)
- Instruction Manual
- DWTCal Calibration Software
- Calibration Certificates are issued in Accordance with our Scope as granted by NABL per ISO/IEC 17025:2017 Standards - Refer Table 1

OPTIONAL (ADD-ON) ITEMS

- Right angled Adaptor
- Two Gauge Adaptor
- Conversion Weight Sets to convert from one unit of Pressure to another
- Incremental Weight Sets for smaller increments of Pressure

Dead Weight Tester Software

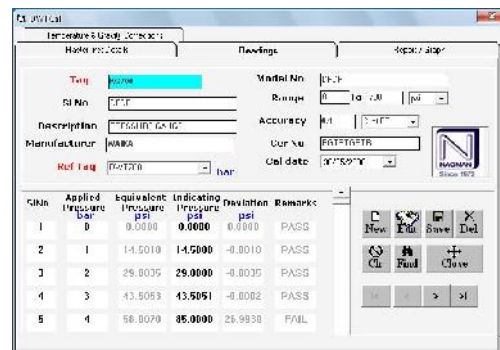
DWTCal

Pressure Calculation, Correction & Certificate Generation Software for Precision Dead Weight Testers

Flexible Working Tool for Easier, Quicker & More Accurate Calibration

SALIENT FEATURES

- Menu Driven, easy to use software
- Maintain Multiple Dead Weight Tester files
- 5 Pressure Units
- Pre-loaded Calibration Data
- Automatic generation of Calibration Certificates
- Pressure Equivalent calculations with all corrections applied
- Allows users to apply all necessary corrections
(Local Gravity, Pressure Head, Temperature etc.)
- to enhance the performance / Accuracy of the Dead Weight Tester
- Calibration details are stored and/or automatically inserted into a Calibration Certificate
- Windows XP or higher OS Compatible



Manufactured by

NAGMAN INSTRUMENTS & ELECTRONICS (P) LTD.

Chennai-Bangalore National Highway, Nazarethpet P.O., Chembarambakkam,
Chennai – 600 123. INDIA.

Domestic Sales Phone : 044 – 66777020, 005, 021, 024. Fax : 044 – 66777050. E-Mail : mktgchennai@nagman.com
Export Sales Phone : +91-44-66777006, 008. Fax : +91-44-66777050. E-Mail : exports@nagman.com

www.nagman.com

AN ISO 9001:2015
CERTIFIED COMPANY