

Diaphragm seals for sanitary use

Model DS52

Standard Tri-clamp connections
ASME B40.100

Features

- SS 316L diaphragms welded to a SS316L top housing
- Compatible with Tri-Clover
- Easy to remove from process

Ranges

15 psi up to 1600 psi
1 kg/cm² up to 40 bar & kg/cm²
100 kPa up to 4000 kPa

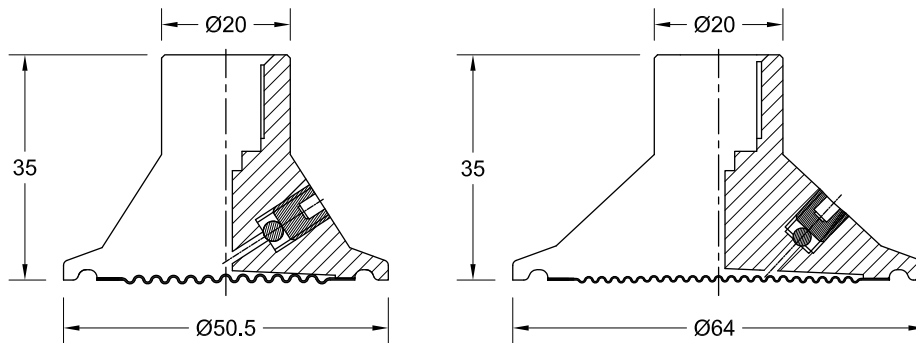
Applications

Pharmaceuticals
Dairy & Food process industry
Biotechnology and filtration industries
Breweries, distilleries, wineries and citrus juice production plants



Model	DS52	
Process connection size	1 1/2" Clamp	2" Clamp
Pressure range in bar (min max)	0/2.5 0/40 for 63mm (2.5"), 0/4 0/40 for 100mm (4")	0/1 0/40 for 63mm and 100mm (4")
Instrument Connection	1/4" BSP (F)	
Material, Diaphragm & Top housing	Stainless steel 316L	
Accuracy	Additional 0,5 % to the specified tolerance of the mounted instrument	
Filling liquids (temperature range)	Glycerin (0/300 °F, -18/150 °C), vegetable oil (32/248 °F, 0/120 °C), Food grade silicone (-13/400 °F, -25/200 °C)	
Mounting	Direct	
Weight in grams	160	240
Accessories, options	Pressure gauges, transducer	

General dimensions in mm



1 1/2" Tri-clamp

2" Tri-clamp

Order information

Process connection	Type	Diaphragm and top housing	Instrument connection	Filling fluid	Options
(15) 1 1/2" Tri-clamp	DS52	(S) 316L	(13T) 1/4" BSP(F)	(CG) Glycerin (direct mounted, -18/150 °C)	(NH) Tagging marked
(20) 2" Tri-clamp				(GZ) Vegetable oil (direct mounted, 0/120 °C)	(C) Clamp
				(CZ) Food grade silicone (direct mounted or with capillary, -25/200 °C)	(G) Gasket
				others on request	(PE) Electro polishing

How to order

Process connection	Type	Diaphragm and top housing	Instrument connection	Filling fluid	Option
15	DS52	S	13T	GZ	NH

Precision Mass Products Pvt. Ltd.

Plot No.: 2306, G.I.D.C. Chhatral, Ta: Kalol, Dist.: Gandhinagar,
Chhatral -382729, Gujarat, India.
Telephone: +91-2764 233681/82/83 Fax: +91-2764-233440
Email: sales@precisionmass.com www.precisionmass.com
All specifications are subject to change without notice.

• North Zone : sales.delhi@precisionmass.com
• East zone : sales.kolkata@precisionmass.com
• West zone : sales.mumbai@precisionmass.com
• South zone : sales.chennai@precisionmass.com
IN.DS52 Rev. D 18/01/2018