

# Pressure switch mechanical Model PSM-530

Switzer data sheet PSM-530



## Applications

- Automatic start/stop of compressors
- Automatic start/stop of water pumps

## Special features

- Robust design
- Triple pole cut-in/cut-out
- Diaphragm sensor
- Manual on/off



Fig. top: Pressure switch mechanical, model PSM-530  
Fig. bottom: Pressure switch mechanical with relief valve, model PSM-530

## Description

Model PSM-530 pressure switches are essentially designed for on-off pressure control applications such as air compressors or water pumps to control their working between the minimum and maximum setting values. At the maximum setting value, pressure switch contacts open and stops the motor. At the minimum value, pressure switch contacts close and start the motor.

A diaphragm senses the change in pressure and actuates a triple pole contact switch, which enables control of 3-phase motors.

The set point (cut-out pressure) and reset point (cut-in pressure) are adjusted by a range screw and a differential screw.

A pressure relief valve (unloader valve) to relieve the pressure locked at the compressor cylinder head is available in model PSM-530.

## Standard version

### Switch enclosure

Cover: ABS, plastic

Housing: Steel, powder coated

### Repeatability

±2 % of full scale value

### Permissible ambient temperature

-40 °C ... +70 °C

### Permissible medium temperature

-20 °C ... +70 °C

### Process connection

- G 1/2 (F)
- G 1/4 (F)
- Optional process connection available on request

### Measuring element

Nitrile diaphragm (NBR) fabric interlaid

### Pressure connector

Die cast aluminium

### Gasket

Process connection: Nitrile

Cover: Silicone

### Switch contacts

Triple pole single throw (TPST) contact system

### Switching function

Normally closed contacts

### On-off differential

Adjustable

### Manual on/off ★

Standard

### Electrical rating

AC-15: 9A, 440V

### Electrical entry

Rubber grommet suitable for Ø 6 ... 14 mm cable

### Ingress protection

IP44 (EN 60529)

### Mounting

Direct online

### Pressure relief valve (only PSM-530-9U, PSM-530-15U)

1/4" flare connection with nut

### Conformity

Generally to BS:6134:1991

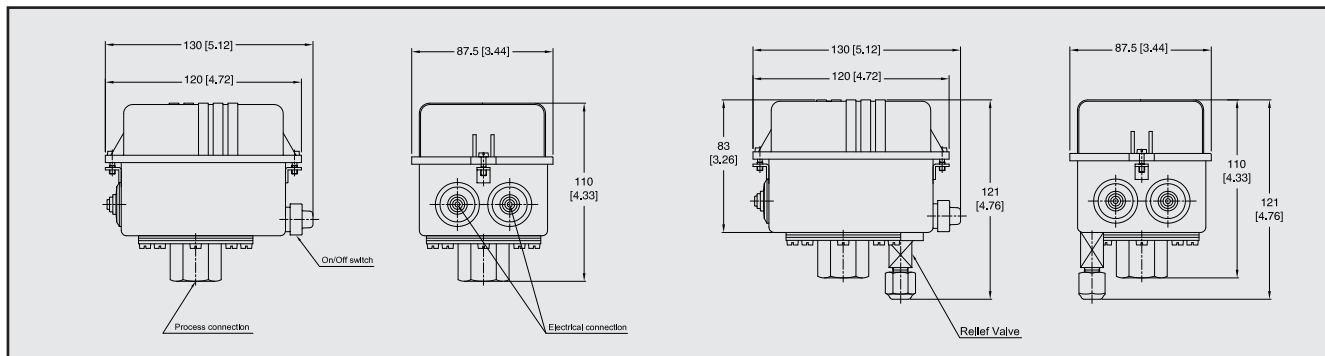
## Ordering matrix

Model	Range in bar	Settable Range in bar	Differential in bar		Max. pressure in bar	Pressure relief valve
			Min.	Max.		
PSM-530-4	1 ... 4	1.7 ... 4	0.7	3	8	×
PSM-530-9	2.5 ... 9.5	4.3 ... 9.5	1.8	7	20	×
PSM-530-15	7 ... 15	9.3 ... 15	2.3	7	20	×
PSM-530-9U	2.5 ... 9.5	4.3 ... 9.5	1.8	7	20	✓
PSM-530-15U	7 ... 15	9.3 ... 15	2.3	7	20	✓

Note:

★ Add suffix "X" in the model number if manual switching option is not required. (e. g. PSM-530-9U to PSM-530-9UX)

## Dimensions in mm



## Ordering information

Model / Optional process connection

© 2018 Switzer Process Instruments Pvt. Ltd., all rights reserved.  
The specifications given in this document represent the state of engineering at the time of publishing.  
We reserve the right to make modifications to the specifications and materials.



**Switzer Process Instruments Pvt. Ltd.**  
128 SIDCO North Phase  
Ambattur Industrial Estates, Chennai 600 098  
Tel. +91 44 2625 2017 / 2018 / 4991 / 4324  
sales@switzerprocess.co.in  
www.switzerprocess.co.in

**Works**  
C-123, Site No.1, Industrial Area  
Bulandshahar Road, Ghaziabad 201 009